



BlackPearl for Avid Interplay | Production

Certified, supported, and sold by Avid

BlackPearl for Avid Interplay Production Environments

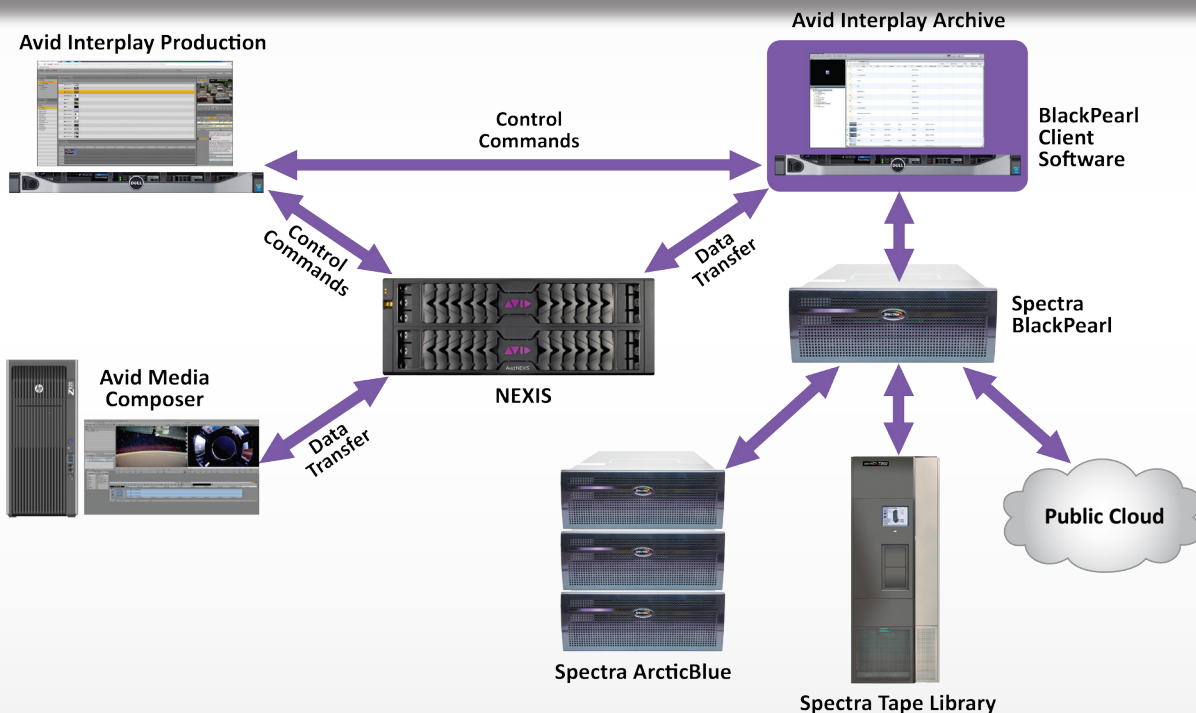
Spectra's BlackPearl® Converged Storage System provides a seamlessly integrated multi-tier archive solution for Avid Interplay Production workflows. BlackPearl enables Interplay users to easily store assets to disk, tape and/or cloud in a highly affordable and scalable model that eliminates complexities commonly associated with traditional workflows.

Benefits

- Directly integrated with Interplay | Production
- Reduces complexities and network congestion
- Simplifies workflows
- Lowest cost TCO
- Easily search, preview, and restore assets through Interplay
- Archive non-Avid assets with Eon Browser

How does BlackPearl fit into Avid Interplay workflow?

BlackPearl and Interplay provides users with an end-to-end workflow solution – from ingest to archive. Search, preview and restore, as well as partial file restore options, are all available within Interplay Access.



BlackPearl Solution Offers:

- Multi-tiered storage (disk, tape, cloud)
- Seamless cloud integration
- Multi-tenant
- Partial file restore (PFR)
- Tape ejected for off-site
- Automatic tape repack* (space reclamation)
- Proactive system monitoring
- Non-disruptive data migration*
- Data management policies (Advance Bucket Management)
 - Flexible data retention policies
 - Multiple copies
 - Asset grouping
 - Program grouping
 - Captures asset IDs
 - Data integrity monitoring
- Automatic back-up of all databases
- Archive non-Avid assets
 - Eon Browser for BlackPearl

Disaster Recovery Design Features

- Open standard LTFS
- DR copies
 - Remote BlackPearl, cloud, ejected tape for off-site
- Database back-up:
 - BlackPearl Database
 - Interplay PAM Database
 - Interplay Archive Database
- Easy failover to remote BlackPearl
- Alternate recovery path for assets*

*Roadmap features



System Requirements



Basic Setup

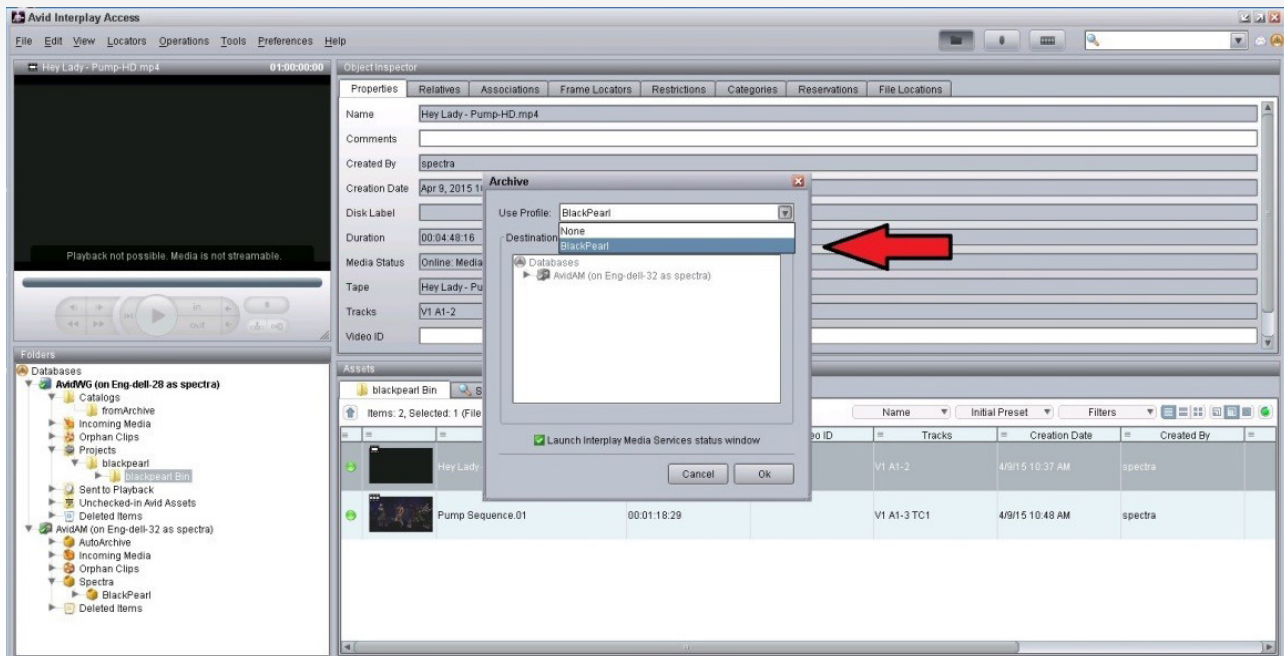
BlackPearl must be configured and available for network communications with the Avid Interplay | Production systems. The BlackPearl hostname, access key, and security key must be set up for the plugin. The Interplay plugin requires .NET Framework 4.5.



Requirements

The minimum requirements are Avid Interplay | Production version 3.4 and Avid Shared Storage version 4.7.5. Required Avid Interplay components:

- Avid Shared Storage V4.7.5*
 - Interplay Engine V3.4*
 - Archive Engine V3.4*
 - Media Indexer V3.4
 - Media Services V3.4
- *or later versions



Installation Overview - As Easy As It Gets

Interplay must be installed on two Interplay systems: Archive Engine and Archive Provider - although the Spectra BlackPearl client code is the same on each install.

BlackPearl System Specifications

- Performance – Up to 3GB/sec
- Database – 50 million to 1 billion objects
- Drives and media – LTO, TS11XX
- Phone home support
- Seamless scaling
 - Enterprise disk: up to 6PB of nearline in a single rack
 - Archive disk: up to 7.1PB in a single rack
 - Spectra Tape library support: T50e through TFinity

Spectra Logic

6285 Lookout Road • Boulder, CO • 80301 • USA
 303-449-6400 • 800-833-1132
 www.spectralogic.com • Email: sales@spectralogic.com

AVID

75 Network Drive • Burlington, MA • 01803 • USA
 www.avid.com/US/about-avid/contact