

BlackPearl for Avid Interplay | MAM

Certified, supported, and sold by Avid

BlackPearl for Avid Interplay MAM

Spectra's BlackPearl® Converged Storage System provides a seamlessly integrated multi-tier storage solution for Avid Interplay MAM eliminating the need for a traditional middleware and its licensing cost models, reducing recurring and scaling costs. BlackPearl, as a simple plug & play gateway, allows Interplay MAM users to store assets to disk, tape and/or cloud in a highly affordable and scalable model that eliminates complexities commonly associated with traditional workflows.

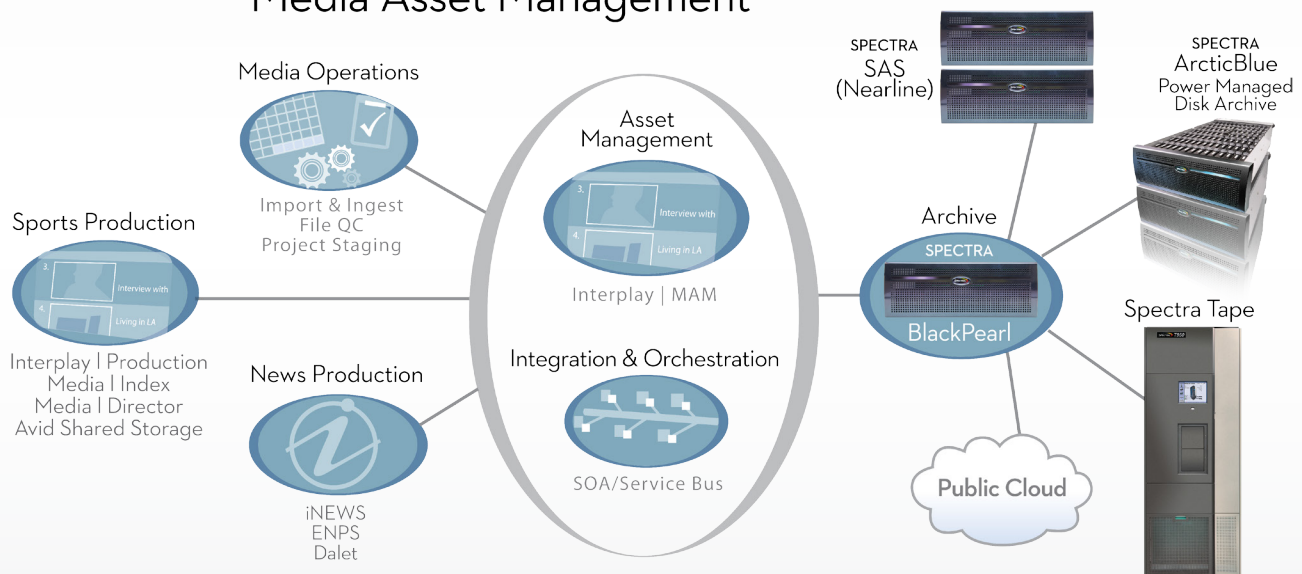
Benefits of BlackPearl and Avid Interplay MAM

BlackPearl and Interplay MAM provides users with an end-to-end solution to ingest, manage, archive, and track millions of digital assets throughout their lifecycles, enabling users to browse, find and retrieve content quickly.

Solution Highlights

- Integrates directly with Interplay | MAM
- Reduces complexities and network congestion
- Simplifies workflows
- Provides lowest cost TCO
- Archives non-Avid assets utilizing BlackPearl Eon Browser

Media Asset Management



BlackPearl Solution Features:

- Multi-tiered storage (disk, tape, cloud)
- Seamless cloud integration
- Multi-tenant
- Partial file restore (PFR)
- Tape eject for off-site DR
- Automatic tape repack*
- Continuous data integrity check
- Proactive system monitoring
- Non-disruptive data migration
- Data management policies (Advance Bucket Management)
 - Flexible data retention policies
 - Multiple copies
 - Asset grouping
 - Program grouping
- Automatic back-up of all databases
- Archive non-Avid assets via BlackPearl Eon Browser

Disaster Recovery Features:

- Open standard LTFs
- Disaster recovery copies
 - Remote BlackPearl, cloud, ejected tape for off-site DR
- Database back-up:
 - BlackPearl database
 - Interplay MAM database*
- Easy failover to remote BlackPearl
- Alternate recovery path for assets

*Roadmap features



System Requirements



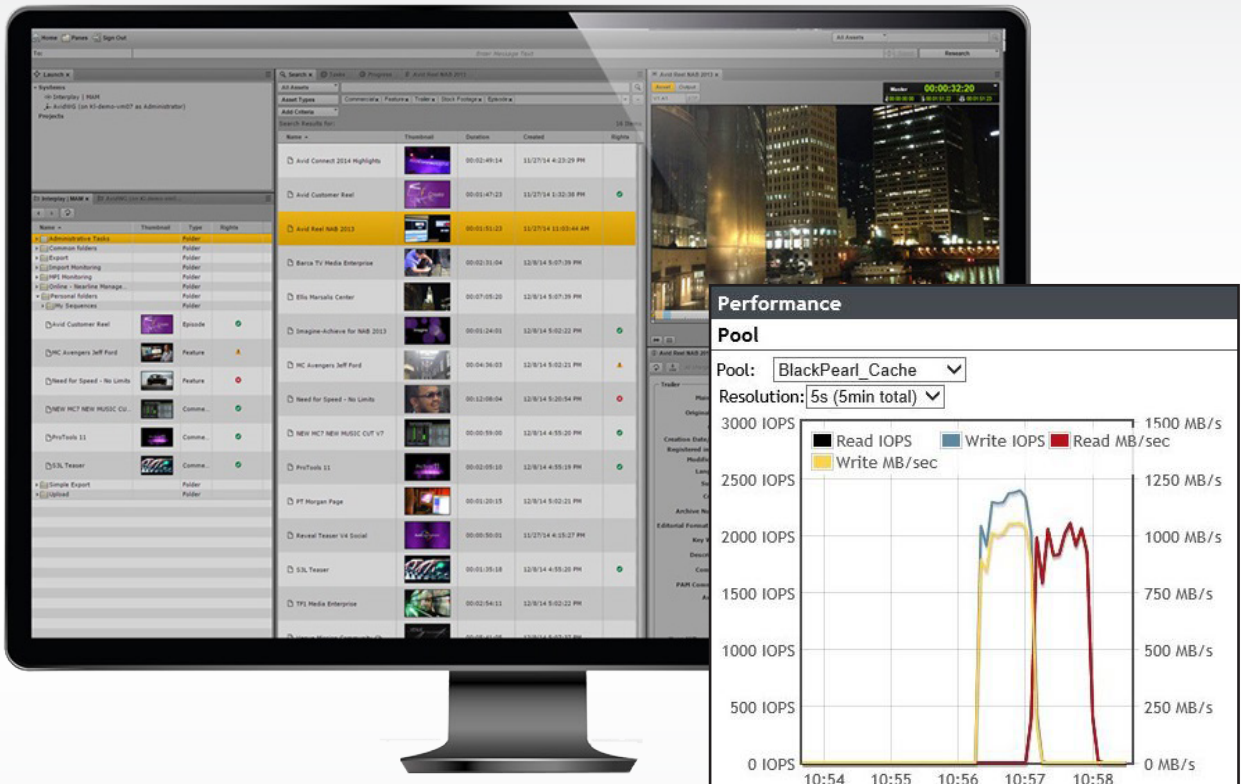
Basic Setup

BlackPearl must be configured and available for network communications with the Avid Interplay | MAM systems. The BlackPearl end point, hostname, access key, security key and bucket must be set up for the archive connector module.



Requirements

The minimum requirements are Avid Interplay | MAM version 5.9 and the related MAM Kit 'Digital Tape Archive'



BlackPearl System Specifications

- Performance – Up to 3GB/sec
- Database – 50 million to 1 billion objects
- Spectra tape library support: T50e through TFinity
- Drives and media – LTO, TS11XX
- Phone home support
- Seamless scaling
 - Enterprise disk: up to 4.2PB of nearline in a single rack
 - Archive disk: up to 6.1PB in a single rack
 - LTO up to 144 drives, and up to 56,230 slots, 337PB native (TFinity)
 - TS11XX up to 144 drives, and up to 44,910 slots, 419PB native (TFinity)

Spectra Logic

6285 Lookout Road • Boulder, CO • 80301 • USA
 303-449-6400 • 800-833-1132
www.spectralogic.com • Email: sales@spectralogic.com

AVID

75 Network Drive • Burlington, MA • 01803 • USA
www.avid.com/US/about-avid/contact