



Project Parking and BlackPearl Archive Solution

Why Spectra Logic BlackPearl for Marquis Project Parking?

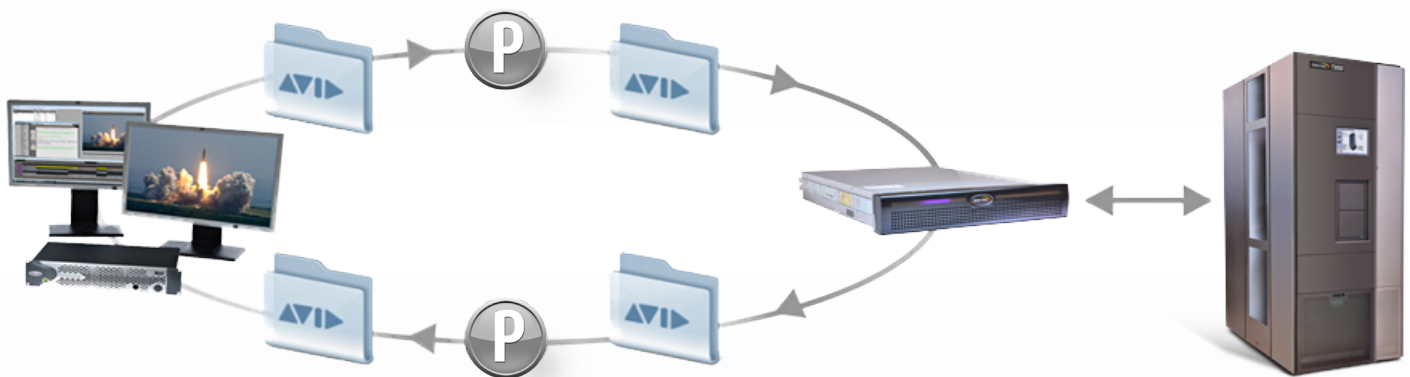
To meet the demands of exponential content growth and long-term retention, Spectra's BlackPearl® Converged Storage System enables Marquis Project Parking users to easily store content forever at virtually no cost. BlackPearl allows content to move seamlessly into deep storage disk and/or tape through the Project Parking access screen.

How does it work?

BlackPearl is directly integrated into the Project Parking application which runs on an Avid connected workstation or server. BlackPearl allows Marquis users to deploy an archive to deep storage disk and/or tape at an extremely low cost, that is easy to manage and highly scalable - to Exabytes of data.

How does BlackPearl fit into the Marquis Project Parking workflow?

Project Parking allows users to manage their Avid Shared Storage storage and copy Avid projects into BlackPearl. The BlackPearl integration makes direct archive and restore operations available within Project Parking.



System Features

- Enables short and long form archive in one system
- Full File Restore
- Non-disruptive data migration*
- Automatic tape repack* (space reclamation)
- Supports LTO and Enterprise Tape Technologies
- Transparent Caching
- Manage externalized tapes via BlackPearl GUI
- Data management policies (Advanced Bucket Management)
- Data retention policies
 - Multiple copies
 - Supports SAS & SMR for nearline & archive disk
 - Remote copy
- Guaranteed future access

**Roadmap features*

BlackPearl System Specifications

- Seamless scaling
 - Enterprise disk: up to 6PB of nearline in a single rack
 - Archive disk: up to 7.1PB in a single rack
 - Spectra Tape library support: T50e through TFinity
- Performance - Up to 3GB/sec
- Database - 50 million to 1 billion objects
- Drives and media - LTO, TS11XX
- Phone home support

Technology Solution

The integration between Project Parking and BlackPearl provides Avid users a fully functioning, affordable archive - for the first time ever. Users can quickly and easily manage, archive, find, and restore large volumes of valuable media content. The solution allows users to archive and restore both complete Avid Projects as well as individual Avid Bins, it also allows users to quickly and effortlessly manage large volumes of media content in a seamless workflow like never before.

- Eliminates complexities
- Extremely low cost
- Workflow friendly
- Unrestricted access to content at any time

System Requirements



Requirements

A BlackPearl must be configured and available for network communications with Project Parking. The BlackPearl hostname, access key, and security key must be configured for the S3 plugin.

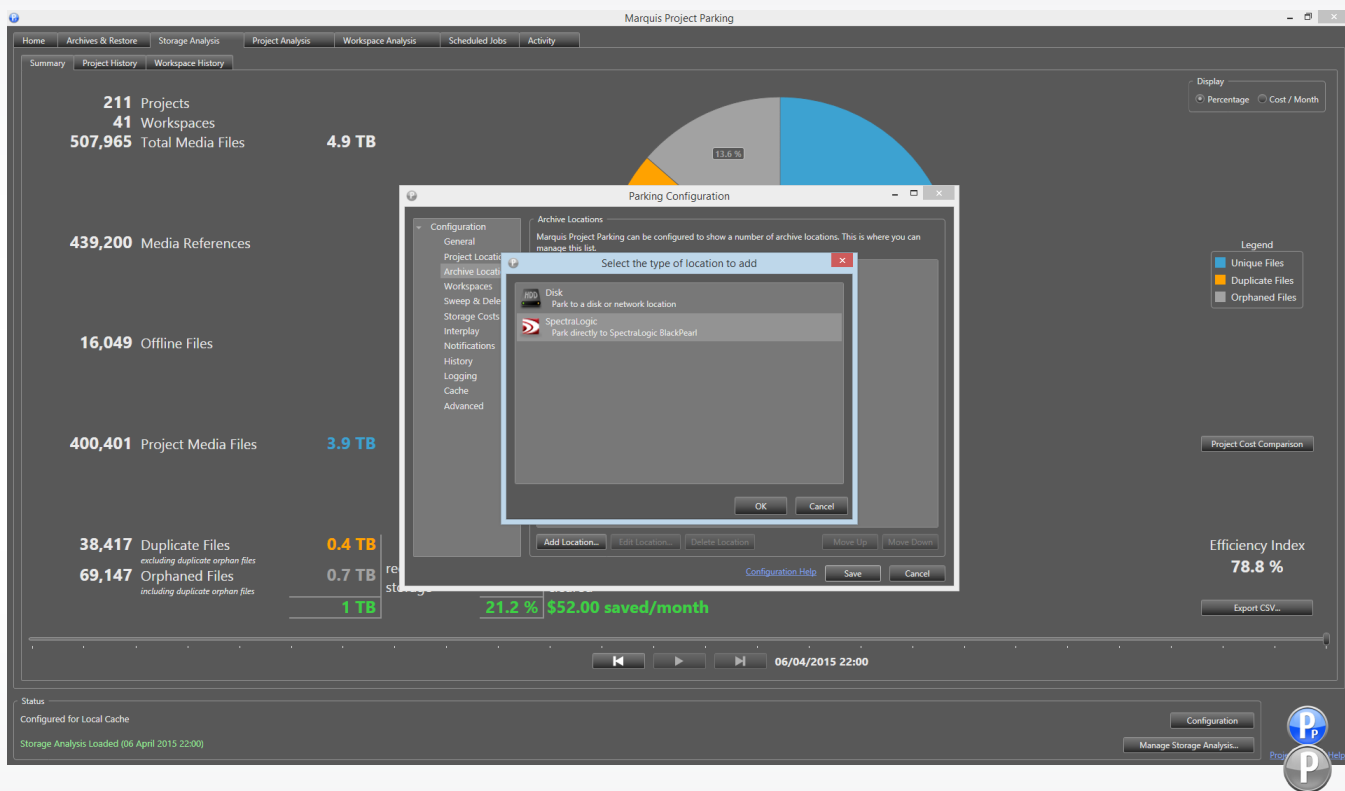
For integration with Marquis Project Parking a BlackPearl version 3.2.1 or later is required.



Requirements

The Project Parking application can be installed on a Windows Workstation or Server with connections into Avid Shared Storage. This requires the use of an Avid Shared Storage connection client license.

For integration with Avid Interplay systems the Interplay Web Services is required (2.7.5 or later)



Installation Overview

The Project Parking application is provided as an installer allowing the BlackPearl plugin to be included during the standard installation. Once completed, the user enters the connection details for BlackPearl into the applications configuration. Once Project Parking is set up to view the Avid Projects and Media Workspaces, the user will be able to start to manage their system.

MSI Installer is provided by Marquis.

Spectra Logic

6285 Lookout Road • Boulder, CO • 80301 • USA
 303-449-6400 • 800-833-1132
 www.spectrallogic.com • Email: sales@spectrallogic.com

Marquis Broadcast Limited

23 Horseshoe Park • Pangbourne Reading Berkshire • UK • RG8 7JW
 +44 (0) 118 984 4111
 www.marquisbroadcast.com • Email: info@marquisbroadcast.com