

BlackPearl for Avid MediaCentral | Asset Management

Certified, supported, and sold by Avid

BlackPearl for Avid MediaCentral

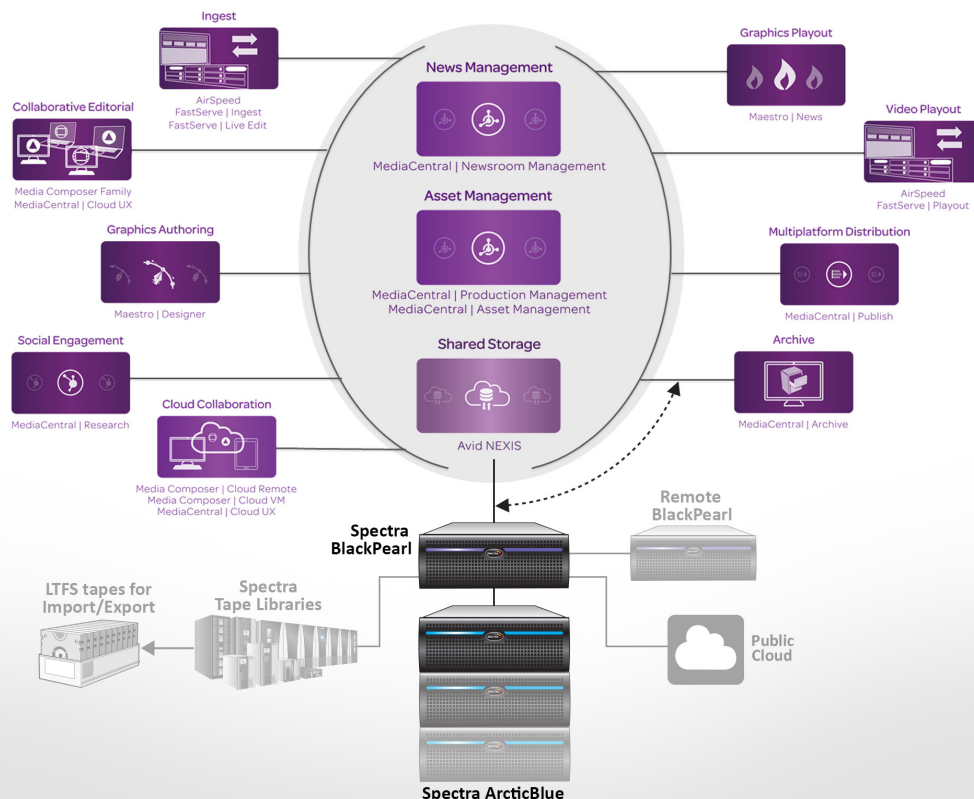
Spectra's BlackPearl® Converged Storage System provides a seamlessly integrated multi-tier storage solution for Avid MediaCentral users, eliminating the need for additional middleware and its recurring and outdated licensing model. BlackPearl, as a simple plug-and-play storage platform, allows MediaCentral users to automate and simplify the management of their assets on the most suitable storage medium required, including public cloud. Direct integration of BlackPearl with MediaCentral eliminates complexities and costs commonly associated with deployment and support of legacy middleware systems.

Benefits of BlackPearl and Avid MediaCentral

BlackPearl and MediaCentral provides users with an end-to-end high-performance solution from ingest to distribution and everything in between. The joint solution manages and tracks digital assets throughout their lifecycles, enabling users to browse, find and retrieve content quickly. Accelerating every part of the workflow, the BlackPearl and Avid MediaCentral solution reliably integrates newsroom, sports, post, and live production workflows into a single scalable user experience.

Solution Highlights

- Fully integrates directly with MediaCentral
- Reduces complexities and network congestion
- Automates and simplifies workflows
- Provides lowest total cost of ownership
- Eliminates the need for third party applications



BlackPearl Solution Features:

- Multi-tiered storage (disk, tape, public cloud)
- Seamless cloud integration
- Multi-tenant
- Partial file restore (PFR)
- Tape eject for off-site disaster recovery
- Automatic tape repack
- Continuous data integrity check
- Proactive system monitoring
- Non-disruptive data migration
- Data management policies (Advance Bucket Management)
 - Flexible data retention policies
 - Multiple copies
 - Asset grouping
 - Program grouping
- Automatic back-up of all databases
- Optional hot-pair for greater availability
- Archive non-Avid assets via BlackPearl Eon Browser

Disaster Recovery Features:

- | | | |
|---|---|--|
| <ul style="list-style-type: none"> • Open standard LTF5 • Disaster recovery copies <ul style="list-style-type: none"> – Remote BlackPearl, cloud, ejected tape for off-site disaster recovery | <ul style="list-style-type: none"> • Database backup: <ul style="list-style-type: none"> – BlackPearl – MediaCentral* | <ul style="list-style-type: none"> • Easy failover to remote BlackPearl • Alternate recovery path for assets |
|---|---|--|



System Requirements



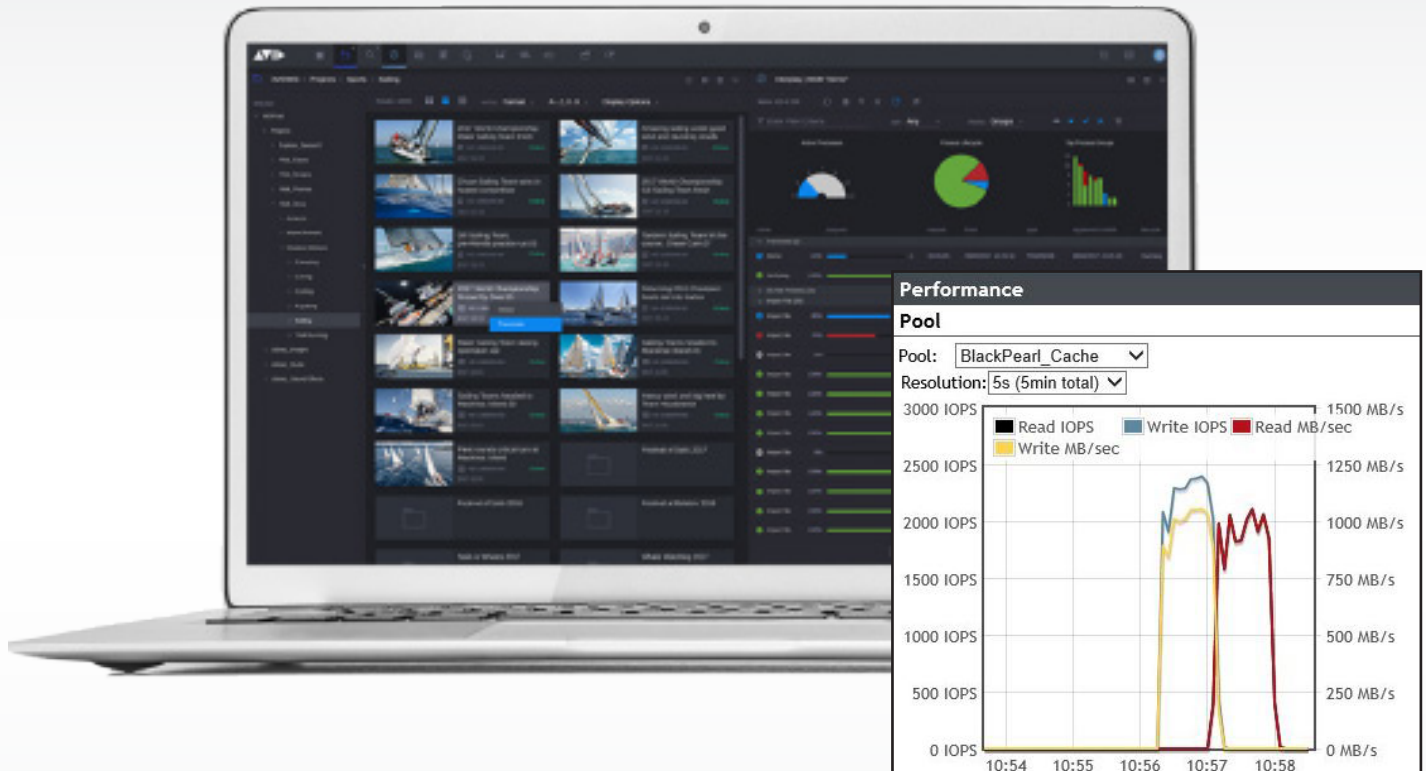
Basic Setup

BlackPearl must be configured and available for network communications with the Avid MediaCentral. The BlackPearl end point, hostname, access key, security key and bucket must be set up for the archive connector module.



Requirements

The minimum requirements are Avid MediaCentral version 5.9 and the related MAM Kit including MediaCentral | Archive.



BlackPearl System Specifications

- Performance – Up to 3GB/sec
- Database – 50 million to 1 billion objects
- Spectra tape library support: Spectra® T50e through Spectra® TFinity and Spectra® Stack Tape Libraries
- Drives and media – LTO, IBM’s TS11XX
- Phone home support
- Seamless scaling
 - Spectra® ArcticBlue nearline disk: up to 10PB in a single rack
 - LTO up to 144 tape drives, and up to 56,230 slots
Up to 674PB native (TFinity ExaScale Tape Library)
 - IBM’s TS11XX up to 144 tape drives, and up to 44,910 slots,
Up to 674PB native (TFinity ExaScale Tape Library)

Spectra Logic

6285 Lookout Road • Boulder, CO • 80301 • USA
 303-449-6400 • 800-833-1132
www.spectrallogic.com • sales@spectrallogic.com

AVID

75 Network Drive • Burlington, MA • 01803 • USA
www.avid.com/US/about-avid/contact